



Tata Steel International (Australasia) Ltd

Coil, Sheet, & Plate

Stainless Steel

TATA STEEL

SECTION A

Contents

KBR 2000 mm Sheet/Coil	Pages	A1 - A2
Coil	Page	A3
Sheet	Pages	A4 - A5
Chequer Plate	Page	A6
Plate	Page	A7
Deco – Embossed/Patterned Finishes	Pages	A8 - A9
Expanded Metal	Page	A10
Wire Mesh	Page	A11
Films - Protective adhesive / Die-cover	Page	A12

**Outokumpu
KBR 2000
Stainless Sheet/Coil**

**makes it more economical
to think**



2000 mm wide Sheet/Coil

KBR Wide Sheet/Coil saves more than 20% of manufacturing costs

What is KBR?

KBR is an abbreviation which in Swedish stands for Cold, Wide and Stainless. It has become known as the name for the widest continuously cold rolled stainless sheet and light gauge plate in the world.

KBR is regularly available in 2000mm width and standard thicknesses from 1.5mm-6.0mm. Also 72 inches and 80 inches in gauge thicknesses are regularly rolled. For special projects or large repeating requirements, it can be supplied in custom widths, as well as custom thicknesses and lengths to very precise tolerances.

In order to meet your immediate requirements, KBR is available from Outokumpu stocks worldwide and from selected service centres offering standard or special lengths, cut from coil.

KBR is available in both standard stainless steel grades and in many special grades produced by Outokumpu to meet particular requirements for strength, corrosion resistance, or high temperature properties.

Why Outokumpu KBR Wide Sheet?

Outokumpu KBR sheet enables you to fabricate a higher **quality** product at **lower** total costs.

Example

The example below is taken from a documented cost study for the commercial manufacture of a large cylinder from stainless steel by a fabricator experienced in large construction. KBR saved some 20% of the manufacturing time and produced a better quality product with a more appealing appearance. As illustrated, savings were realised in each step of the manufacturing process compared with the model using 1500mm wide material. Similar advantages can also be obtained when designing tanks using longitudinal welds.

EXAMPLE OF COST SAVING WITH KBR

Manufacture of a cylinder:	Height 7500 mm	Diameter 2100 mm	Wall thickness 6 mm
	Using 1500 mm sheet 5 pieces 6594 x 1500 x 6 mm		Using KBR 2000 mm 3 pieces 6594 x 2000 x 6 mm 1 piece 6594 x 1500 mm x 6 mm
1. Rollforming, tack welding and plasma welding	1170 minutes		936 minutes
2. Joining the shells together and tack welding	720 minutes		540 minutes
3. Welding of shells - plasma welding	864 minutes		648 minutes
4. Post treatment of welds* (visual inspection and pickling)	288 minutes		216 minutes
TOTAL TIME	3042 minutes or 51 hours		2340 minutes or 39 hours

TOTAL TIME SAVING – 23 PER CENT

* If more elaborate post treatment is required, e.g. grinding radiographic examination, dye penetration, the time taken will be longer.

More welds mean

- more seam grinding and inspection time
- visually less appealing construction
- more shop time
- less shape stability on larger vessels
- more edge preparation
- increased risk of corrosion
- greater costs

KBR 2000 offers the following advantages:

- 2000 mm wide sheet means a better overall appearance
- 2000 mm wide sheet cuts costs by reducing time spent on welds, post weld treatment, testing and handling
- 2000 mm wide sheet requires less edge preparation
- 2000 mm wide sheet reduces corrosion risks
- 2000 mm wide sheet makes it possible for some components to be fabricated with no seams
- 2000 mm wide sheet provides ease of fabrication and greater shape stability in large vessels
- 2000 mm wide sheet is easy to keep clean - an important factor for applications where demands on hygiene are high, e.g. the food, beverage and pharmaceutical industries

THE KBR 2000 ADVANTAGE: QUALITY AND ECONOMY

STAINLESS STEEL COIL

Manufactured to - ASTM - A240

SIZE mm (Thickness x Width)	304			316	430			2205
	2B	BA	SATIN	2B	2B	BA	SATIN	2E
0.45 x 915								
0.45 x 1219	.	.						
0.55 x 915	.							
0.55 x 1219	
0.70 x 915	.							
0.70 x 1219	
0.90 x 915	.	.						
0.90 x 1219		
0.90 x 1524/1500	.							
1.20 x 915	.	.	.					
1.20 x 1219		
1.20 x 1524/1500	.			.				
1.50 x 915	.	.	.					
1.50 x 1219	.	.		.				
1.50 x 1524/1500	.			.				
1.50 x 2000	.							
2.00 x 915	.							
2.00 x 1219	.			.				
2.00 x 1524/1500	.			.				.
2.00 x 2000	.							
2.50 x 1219	.			.				
2.50 x 1524/1500	.			.				
2.50 x 2000	.							
3.00 x 1219	.			.				
3.00 x 1524/1500	.			.				.
3.00 x 2000	.							
4.00 x 1219	.							
4.00 x 1524/1500	.			.				
4.00 x 2000	.							

OTHER SIZES AND GRADES AVAILABLE ON REQUEST
 PE & LASER COATED COILS ARE ALSO AVAILABLE ON REQUEST
 PLEASE REFER TO YOUR NEAREST CORUS METALS OFFICE

**SPECIAL GRADE COIL, SHEET AND PLATE NOW AVAILABLE EX-STOCK
 CONTACT YOUR NEAREST CORUS METALS OFFICE**

STAINLESS STEEL SHEET

Manufactured to - ASTM - A240

SHEET SIZE (Thickness x Width x Length)	THEORETICAL WEIGHT Kg/Sheet	304			316		430	
		2B	BA	Satin	2B	Satin	BA	Satin
0.45 x 1219 x 2438	10.70	•						
0.55 x 915 x 2438	9.82	•						
0.55 x 1219 x 2438	13.08	•	•	•			•	•
0.55 x 1219 x 3048	16.35	•						
0.70 x 915 x 2438	12.49	•	•	•				
0.70 x 1219 x 2438	16.64	•	•	•	•	•	•	•
0.70 x 1219 x 3048	20.81	•		•	•	•		
0.90 x 915 x 2438	16.06	•	•	•				
0.90 x 915 x 3048	20.08	•		•				
0.90 x 915 x 3658	24.10	•		•				
0.90 x 1219 x 2438	21.40	•	•	•	•	•	•	•
0.90 x 1219 x 3048	26.75	•	•	•	•	•		
0.90 x 1219 x 3658	32.11	•	•	•				
0.90 x 1524 x 3048	33.45	•		•				
1.20 x 915 x 2438	21.42	•	•	•				
1.20 x 915 x 3048	26.77	•	•	•				
1.20 x 915 x 3658	32.13	•	•	•				
1.20 x 1219 x 2438	28.53	•	•	•	•	•	•	•
1.20 x 1219 x 3048	35.67	•	•	•	•	•		
1.20 x 1219 x 3658	42.81	•		•				
1.20 x 1524 x 3048	40.15	•		•	•			

STAINLESS STEEL SHEET

CONTINUED

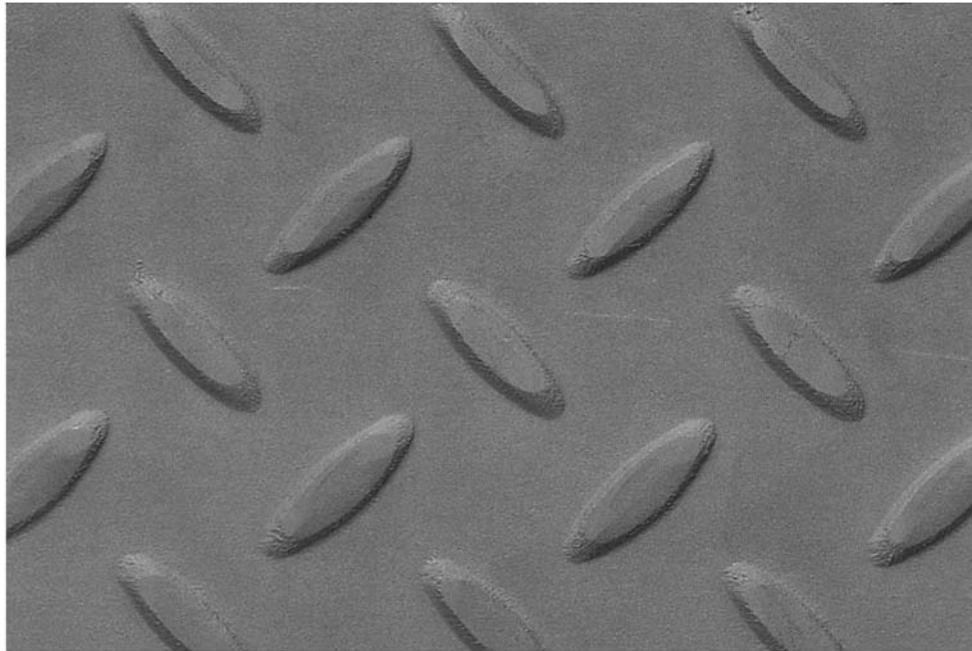
SHEET SIZE (Thickness x Width x Length)	THEORETICAL WEIGHT Kg/Sheet	304			316		2205	253MA	904L
		2B	BA	Satin	2B	Satin	2E	2E	2E
1.50 x 915 x 2438	26.78	•	•	•					
1.50 x 915 x 3048	33.47	•	•	•					
1.50 x 915 x 3658	40.16	•	•	•					
1.50 x 1219 x 2438	35.66	•	•	•	•	•			
1.50 x 1219 x 3048	44.59	•	•	•	•	•			
1.50 x 1219 x 3658	53.51	•	•	•					
1.50 x 1500/1524 x 3048	55.74	•		•	•		•	•	•
1.50 x 1500/1524 x 3658	66.70	•							
2.00 x 915 x 2438	35.69	•		•					
2.00 x 915 x 3048	44.62	•							
2.00 x 1219 x 2438	47.55	•		•	•	•			
2.00 x 1219 x 3048	59.45	•		•	•	•			
2.00 x 1219 x 3658	71.35	•							
2.00 x 1500/1524 x 3048	74.32	•			•		•	•	•
2.00 x 1500/1524 x 3658	88.08	•							
2.50 x 1219 x 2438	59.44	•		•	•	•			
2.50 x 1219 x 3048	74.31	•		•	•	•			
2.50 x 1219 x 3658	89.18	•							
2.50 x 1500/1524 x 3048	92.90	•		•	•				
2.50 x 1500/1524 x 3658	111.50	•							
3.00 x 1219 x 2438	71.33	•		•	•	•			
3.00 x 1219 x 3048	89.17	•		•	•	•			
3.00 x 1500/1524 x 3048	111.48	•		•	•		•	•	
3.00 x 1500/1524 x 3658	132.12	•							

OTHER SIZES AND GRADES AVAILABLE ON REQUEST

PE & LASER COATING SERVICE AVAILABLE – REFER TO SECTION J FOR FURTHER INFORMATION

STAINLESS STEEL CHEQUER PLATE

THICKNESS	SHEET SIZE	THEORETICAL WEIGHT	HOT ROLLED
		KG/PLATE	304
3.50	1219 x 2438	83.21	"
4.50	1219 x 2438	108.30	"
4.50	1500 x 3000	169.12	"



OTHER SIZES AND GRADES AVAILABLE ON INDENT

STAINLESS STEEL PLATE

Manufactured to - ASTM - A240/480

SHEET SIZE (Thickness x Width x Length)	THEORETICAL WEIGHT Kg/Sheet	304		316		2205	253 MA
		2B	No. 1	2B	No. 1	2E	2E
4.00 x 1200 x 2400	92.16	.		.			
4.00 x 1500 x 3000	144.00
5.00 x 1200 x 2400	115.20	.		.			
5.00 x 1500 x 3000	180.00
5.00 x 1500 x 6000	360.00	.					
5.00 x 2000 x 6000	480.00	.					
6.00 x 1200 x 2400	138.24	.					
6.00 x 1500 x 3000	216.00	.		.			
6.00 x 1500 x 6000	432.00	.					
6.00 x 2000 x 6000	576.00	.					
8.00 x 1500 x 3000	288.00		.		.		.
8.00 x 2000 x 6000	748.00		.				
10.00 x 1500 x 3000	360.00		.		.		
12.00 x 1500 x 3000	432.00		.		.		
16.00 x 1500 x 3000	576.00		.		.		
20.00 x 1500 x 3000	720.00		.		.		
25.00 x 1500 x 3000	900.00		.		.		
30.00 x 1500 x 3000	1080.00		.		.		
38.00 x 1500 x 3000	1368.00		.		.		
50.00 x 1500 x 3000	1800.00		.		.		

OTHER SIZES AND GRADES AVAILABLE ON REQUEST

LARGE SIZES ARE AVAILABLE ON INDENT

PE & LASER COATING SERVICE AVAILABLE – REFER TO SECTION G FOR FURTHER INFORMATION

SATIN POLISHING AVAILABLE ON REQUEST

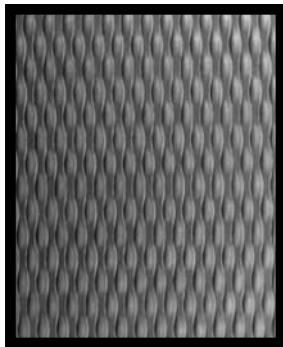
CORUS METALS CAN PLASMA CUT AND MACHINE PLATE TO YOUR EXACT REQUIREMENTS

WATER JET/LASER CUTTING AVAILABLE ON REQUEST

DECO STAINLESS STEEL

Patterned, Embossed, Polished and Standard Finishes

Currently available ex stock

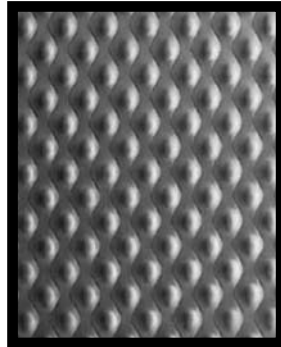


AN5 Brush Finish

T304

0.60 x 1250mm
Length: 2500 & CTL

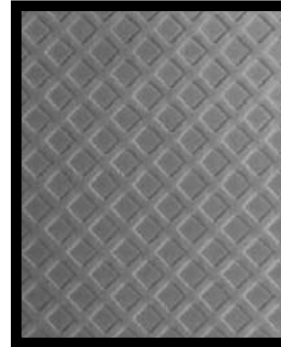
1.20 x 1000mm/1250mm
Length: 2438, 3048, 3658
5000mm & CTL



AN6 Brush Finish

T304

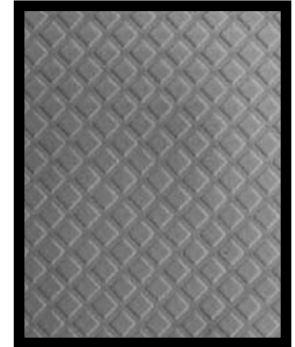
1.60 x 1250mm
Length: 2500, 3000 & CTL



Deco No2 Brush Finish

T304

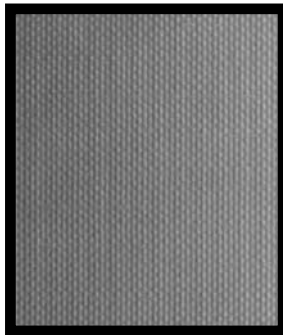
0.80 x 1250mm
Length: 2500 & CTL



Deco No4 Brush Finish

T304

0.80 x 1250mm
Length: 2500 & CTL

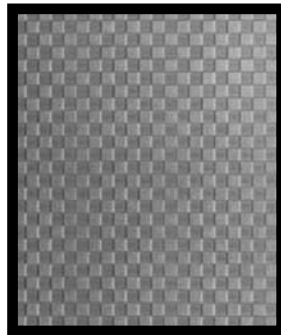


Deco No9 Brush Finish

T304

0.80 x 1250mm
Length: 2500 & CTL

1.20 x 1000mm/1250mm
Length: 2438, 3048, 3658
5000mm & CTL

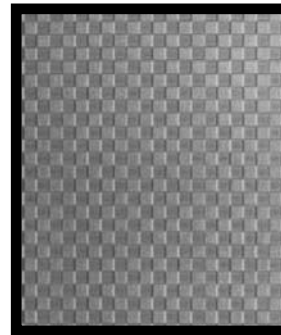


Deco No16 Brush Finish

T304

0.80 x 1250mm
Length: 2500 & CTL

1.20 x 1000mm
Length: 2438, 3048, 3658
5000mm & CTL



Deco No16 Hi-Lited Finish

T304

0.80 x 1250mm
Length: 2500 & CTL

1.20 x 1000mm
Length: 2438, 3048, 3658
5000mm & CTL
(Hi-Lite polished to order)



2B

T304, T316

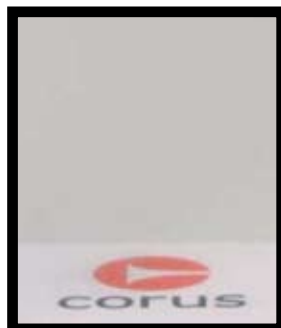
Thickness: 0.45 - 3.00mm
Width : 915, 1219, 1524mm
Length: Various & CTL



Satin

T304, T316, T430

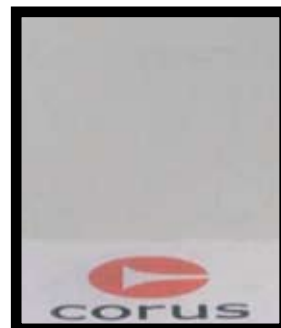
Thickness: 0.55 - 3.00mm
Width: 915, 1219, 1524mm
Length: Various & CTL



T304 BA

T304

Thickness: 0.45 - 1.50mm
Width: 915, 1219mm
Length: Various & CTL



T430 BA

T430

Thickness: 0.55 - 1.20mm
Width: 1219mm
Length: 2438 & CTL



Mirror

T304

1.00 x 1219mm,
Length: 2438
1.50 x 1219mm
Length: 2438

OTHER GRADES, SIZES & THICKNESSES AVAILABLE SUBJECT TO MILL MINIMUM QUANTITIES

To view samples please contact your nearest Corus Office Ph 0800 4 26787

CTL = "Cut To Length" (customer specified sheet lengths)

DECO STAINLESS STEEL

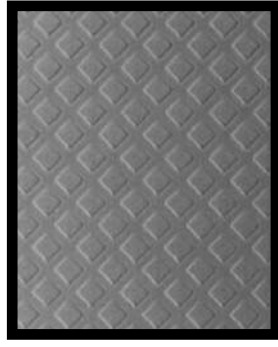
Patterned, Embossed, Polished and Standard Finishes

Indent only



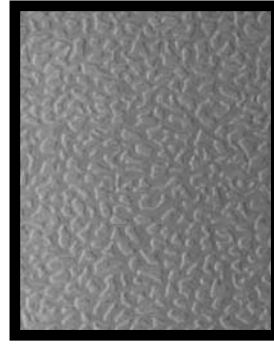
Deco No1 Brush Finish

T304
Indent Only



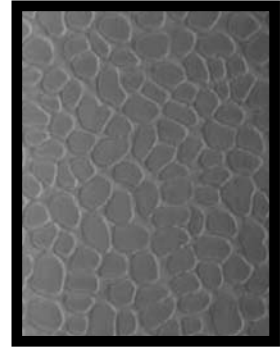
Deco No3 Brush Finish

T304
Indent Only



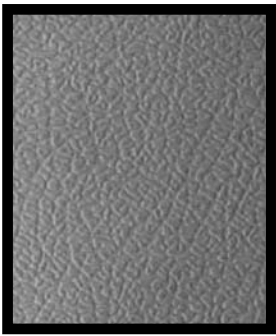
Deco No5 Brush Finish

T304
Indent Only



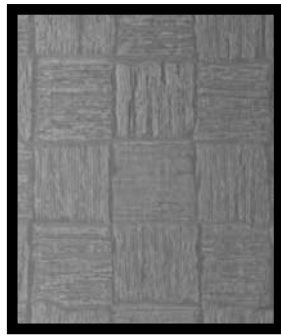
Deco No6 Brush Finish

T304
Indent Only



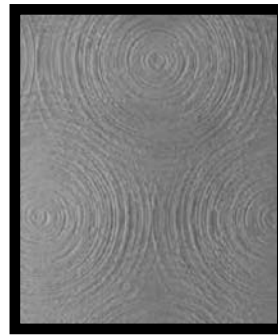
Deco No8 Brush Finish

T304
Indent Only



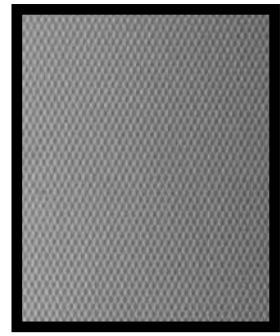
Deco No11 Brush Finish

T304
Indent Only



Deco No15 Brush Finish

T304
Indent Only



Deco No17 Brush Finish

T304
Indent Only



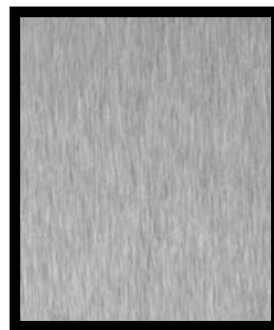
Deco No18 Brush Finish

T304
Indent Only



Deco No19 Brush Finish

T304
Indent Only



Aluminium

No 4
Polishing Service only



T316 BA

Indent Only

NB All patterns shown are available subject to mill minimum quantities

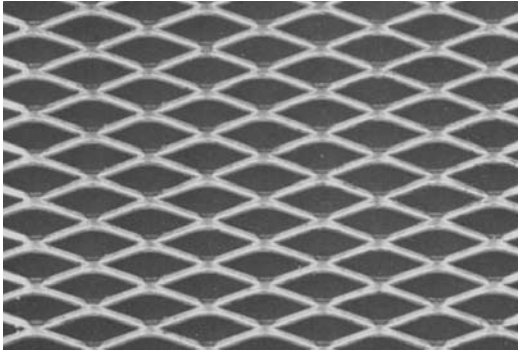
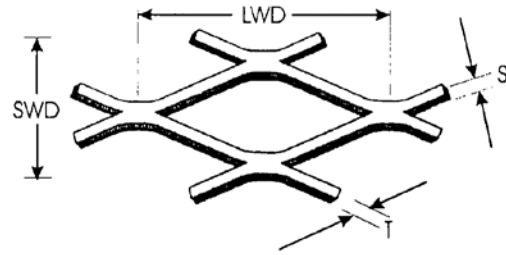
GRADE, SIZE & THICKNESS BY ARRANGEMENT

STAINLESS STEEL EXPANDED METAL

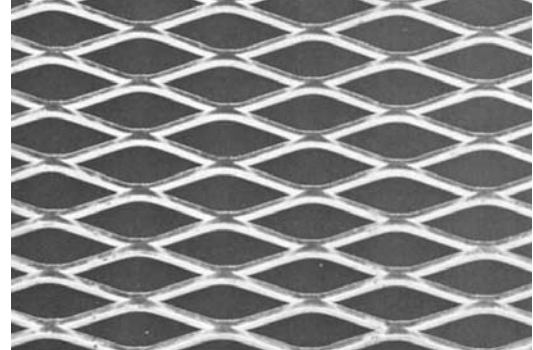
HOW TO ORDER

Information required:

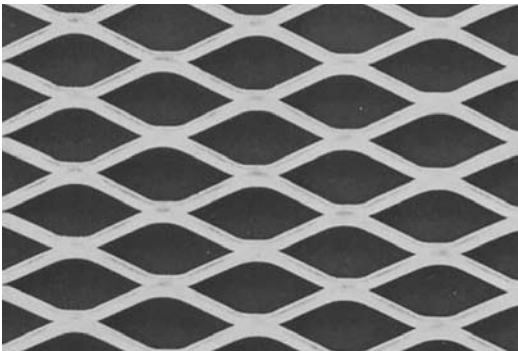
- Material
- Material thickness (T)
- Pattern
- LWD x SWD
- Strand thickness (S)
- Sheet size
- Number of sheets
- Raised pattern or rolled flat



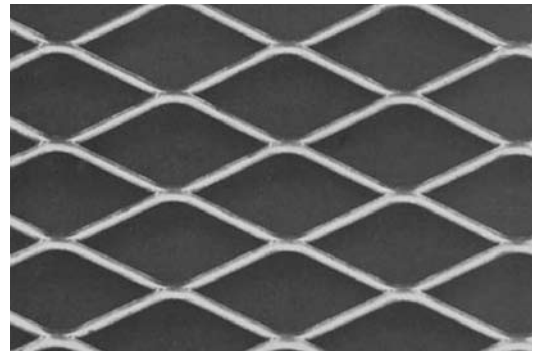
07 RANGE



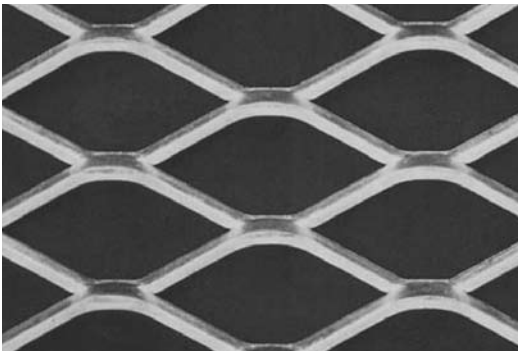
09 RANGE



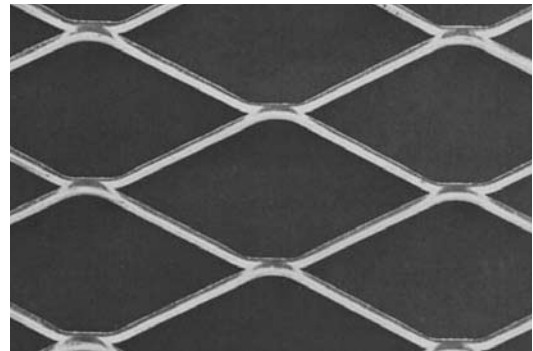
12 RANGE



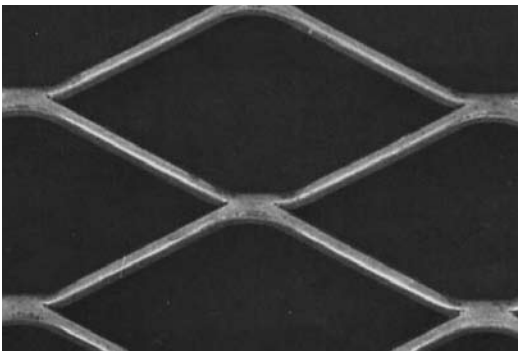
15 RANGE



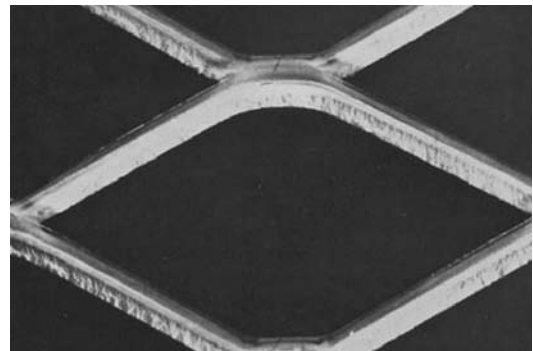
19 RANGE



25 RANGE



38 RANGE



50 RANGE

* SUPPLIED TO ORDER, PLEASE CHECK AVAILABILITY.

STAINLESS STEEL WIRE MESH PLAIN WEAVE

Grade = T304

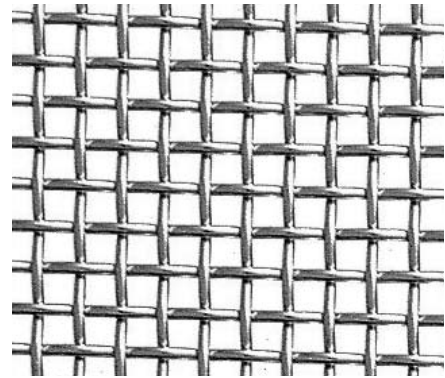
Sold per Lineal metre, minimum order 1 lineal metre.

Mesh - Indicates the number of mesh (holes) within a lineal inch.

Wire - Indicates the wire thickness.

Opening - Indicates the inside distance between the parallel wires.

Open area - gives the percentage of open area in a standard wire mesh.



Mesh	Wire Dia (mm)	Opening (mm)	Open Area (%)	Roll width (mm)
4	0.890	5.46	74.0	1000
6	0.810	3.43	65.6	1000
6	1.190	3.05	51.8	1000
8	0.890	2.29	51.8	1000 / 1220
10	0.584	1.96	59.3	1000
12	0.584	1.52	51.8	1220
16	0.432	1.16	53.0	1000
20	0.406	0.86	46.2	1000 / 1220
30	0.229	0.62	53.1	1220
40	0.203	0.43	46.2	1000
50	0.180	0.33	41.9	1000
60	0.140	0.28	44.4	1000
80	0.121	0.20	38.8	1000
100	0.114	0.14	30.3	1000

WELDED WIRE MESH T304

Mesh	Wire Dia (mm)	Opening (mm)	Open Area (%)	Roll width (mm)
2	1.200	11.20	77	1000

ALTERNATIVE MESH TYPES ARE AVAILABLE ON INDENT

PROTECTIVE ADHESIVE FILMS



The metals industry is under increasing pressure to produce high quality products at lower prices. This has resulted in the use of technologically advanced production machinery to increase productivity. The technology involved in protective films has had to keep pace with these changing demands. We have a variety of protective adhesive films available to meet the various demands of the metals industries.

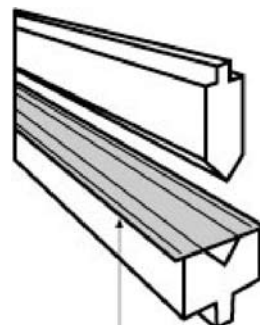
Applications - Deep Drawing, Laser Cutting, Turret Punching, Pressing, Roll forming, Storage, Transportation, etc.,

Material types - Stainless steel, aluminium, copper, brass, pre-painted steels.

We can supply protective film in rolls for you to apply as required, or we can apply them to sheet in our local service centres.

Please contact Corus Metals to discuss the most appropriate film and application method for your end use. Testing may be required prior to commencing production runs.

DIE-COVER FILM



Simply lay Die-cover film over the female die.

Die-Cover film is a proven and economical way to prevent die marks when using a press brake to form Stainless Steel, Aluminium, pre-finished or painted metals. Film life will vary with a number of factors such as the thickness of the metal being formed, the type of metal, and the severity of the bend. While some customers forming light gauge aluminium are getting several hundred bends on a single piece of film, others forming heavy gauge stainless steel may get only a few bends.



Tata Steel International (Australasia) Ltd

Head Office	7 Bruce Roderick Drive East Tamaki Phone 09 271 1780	PO Box 58880, Botany, Manukau 2163 Fax 09 271 1970 Email: headoffice@tatasteelnz.com
Auckland	7 Bruce Roderick Drive East Tamaki Phone 09 271 1781	PO Box 58880, Botany, Manukau 2163 Fax 09 271 1799 Email: auckland@tatasteelnz.com
Mt Maunganui	18 MacDonald Street Phone 07 574 0095	PO Box 4158, Mt Maunganui South 3149 Fax 07 574 0096 Email: tauranga@tatasteelnz.com
Hamilton	27 Ellis Street, Frankton Phone 07 847 8456	PO Box 1133, Waikato Mail Centre 3240 Fax 07 847 0354 Email: hamilton@tatasteelnz.com
Hastings	807 Warren Street Phone 06 876 3360	PO Box 14043, Mayfair, Hastings 4159 Fax 06 876 3411 Email: hastings@tatasteelnz.com
New Plymouth	Cnr Connett Road & Mustang Drive, Bell Block Phone 06 759 9382	PO Box 3094, Fitzroy New Plymouth 4341 Fax 06 755 7575 Email: newplymouth@tatasteelnz.com
Wellington	141 Hutt Park Road Phone 04 568 5014	PO Box 38065, Lower Hutt 5045 Fax 04 568 6367 Email: wellington@tatasteelnz.com
Nelson	4C Akersten Street Phone 03 548 0603	PO Box 413, Nelson 7040 Fax 03 548 0588 Email: nelson@tatasteelnz.com
Christchurch	200 Maces Road, Bromley Phone 03 381 1994	P O Box 570, Christchurch Mail Centre 8140 Fax 03 381 0606 Email: christchurch@tatasteelnz.com

Toll free: 0800 4 26787

Website: www.tatasteelnz.com

Care has been taken to ensure that the contents of this publication are accurate but Tata Steel International do not accept responsibility for errors or for information which is found to be misleading. Suggestions for or descriptions of the end-use or application of products or methods of working are for information only and the company accepts no liability in respect thereof. Before using products supplied or manufactured by the company the customer should satisfy themselves of their suitability. If further assistance is required the company which has extensive research facilities will often be able to help.